

MESSE
TURM
ZÜRICH

Business.
At a higher level.



Welcome to Messeturm Zurich – the new home for your business

- 1 Messeturm Zurich
- 2 Architecture
- 3 Location
- 4 What we offer
- 5 Your advantages
- 6 Quality standards
- 7 Your contact



1

Messeturm Zurich

Take your business to a different level. Messeturm Zurich is situated in Zurich Oerlikon, the booming gateway to Zurich with its excellent transportation connections. This is the perfect home for your business, so arrange a viewing and see for yourself!

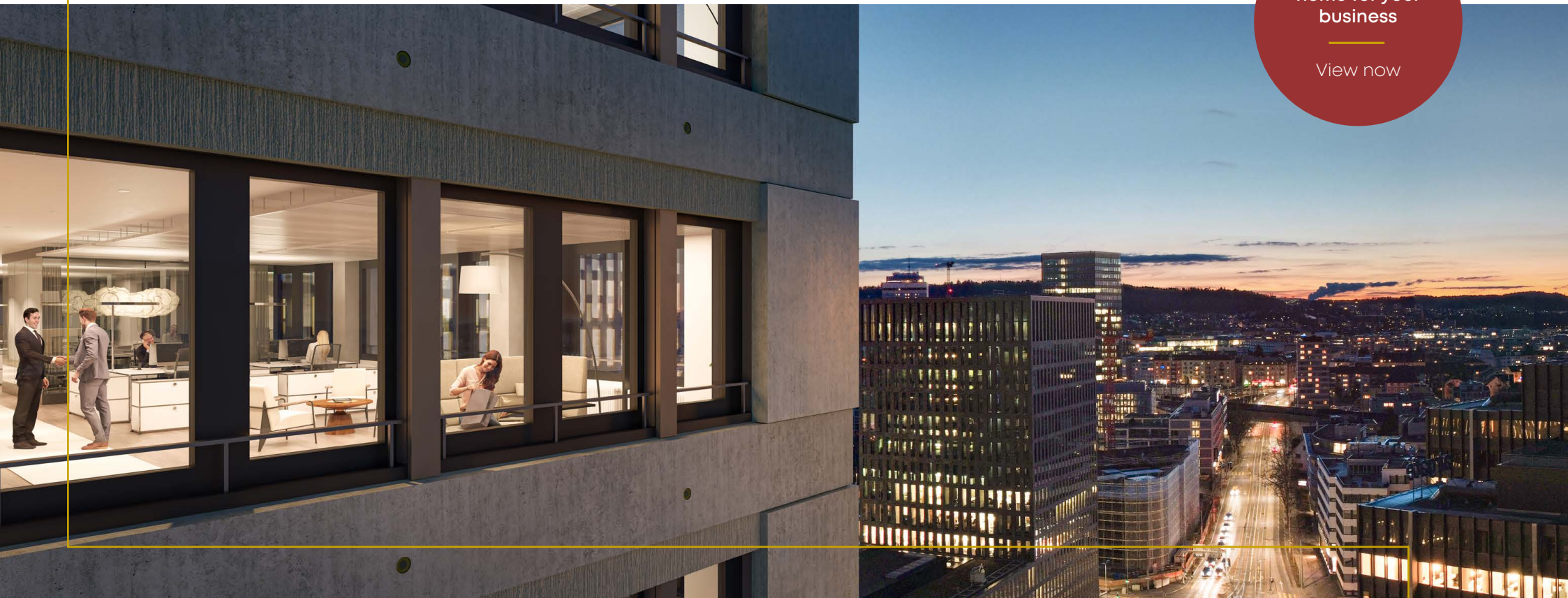
The highest quality for your company

When it comes to space and future expansion, you'll find unlimited opportunities for your business premises on 22 floors. Messeturm Zurich has been built in accordance with the standards required by LEED Platinum certification, thus providing the highest quality and best prospects for your company and its employees.

Business. At a higher level.

The new
home for your
business

[View now](#)





Messeturm Zurich stands out as an architectural highlight and an important part of the skyline of Zurich-Nord. Stauer & Hasler Architects | von Ballmoos Partners have designed Messeturm Zurich to fit harmoniously into the cluster of high-rises in this part of the city. High-quality materials (both inside and outside) ensure it will make the right impression – for your company, too.

2

Architecture

Architecture. At a higher level.

Flexibility, comfort & convenience on every floor

This striking commercial building lies in a prominent location. It has 22 floors and offers between 800 m² and 2,300 m² on each floor, accessed via a core in its center. When it comes to developing your office space, you can come up with almost any idea or request and know it can be implemented, thereby providing the utmost flexibility for your company's requirements. A generously proportioned lobby welcomes your employees and clients, while a roof terrace ensures spectacular views as far as the Alps.



3

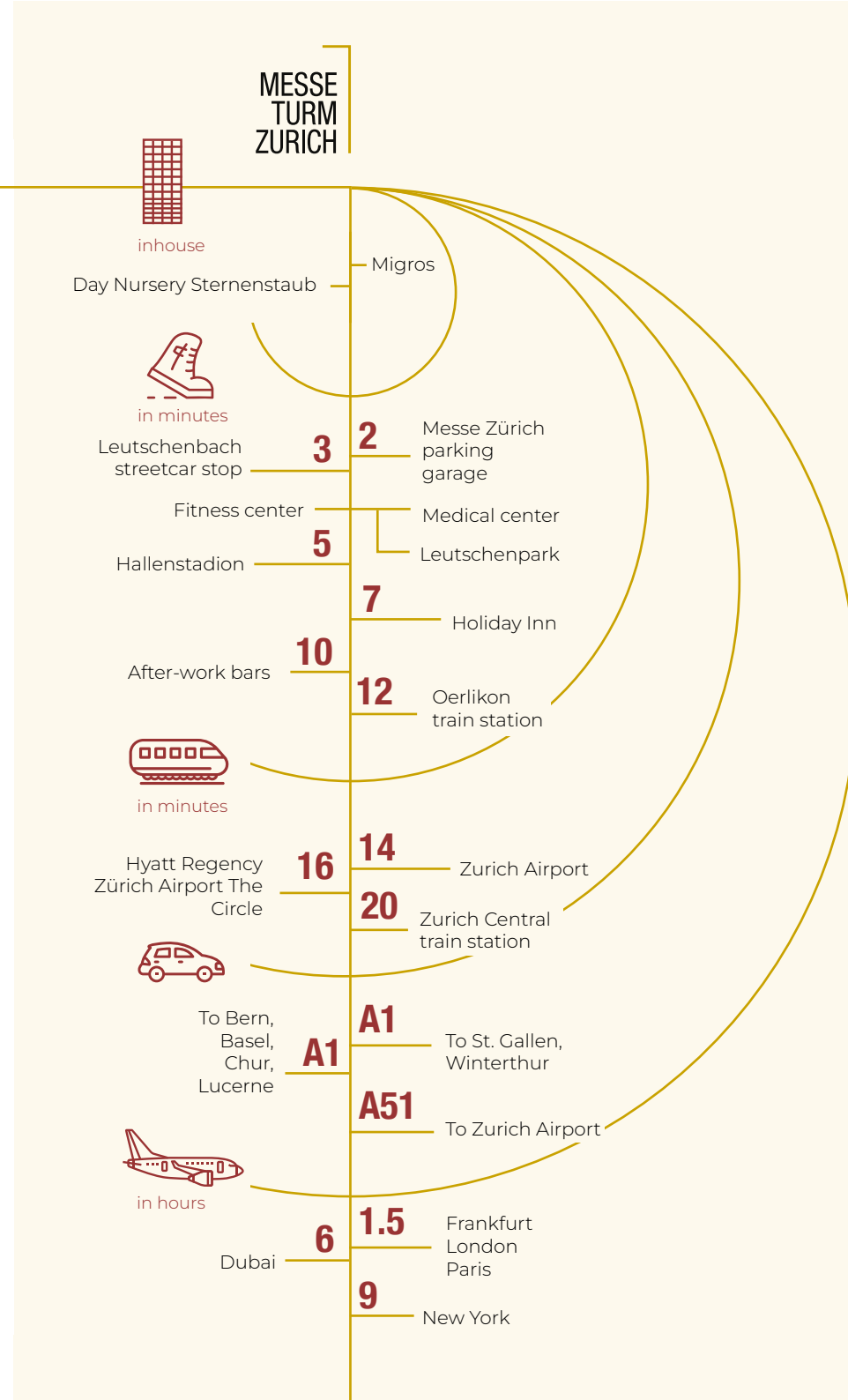
Location

Location. At a higher level.

Messeturm Zurich is located in a prime location. The booming and lively north of Zurich has everything you could possibly want, while trains, streetcars and buses and the nearby freeway offer ideal connections. Zurich Airport can be reached within 10 minutes only. The halls of «Messe Zürich» as well as the adjoining parking garage are located right next to Messeturm Zurich.

A perfect work-life balance

There are plenty of shops, supermarkets, restaurants and bars in Leutschenbach and Oerlikon, while sports, cultural and event venues can be found in the immediate vicinity of Messeturm Zurich. Nature and recreational areas – such as a park with a small lake – are also nearby, and invite you to relax and enjoy your lunch break.

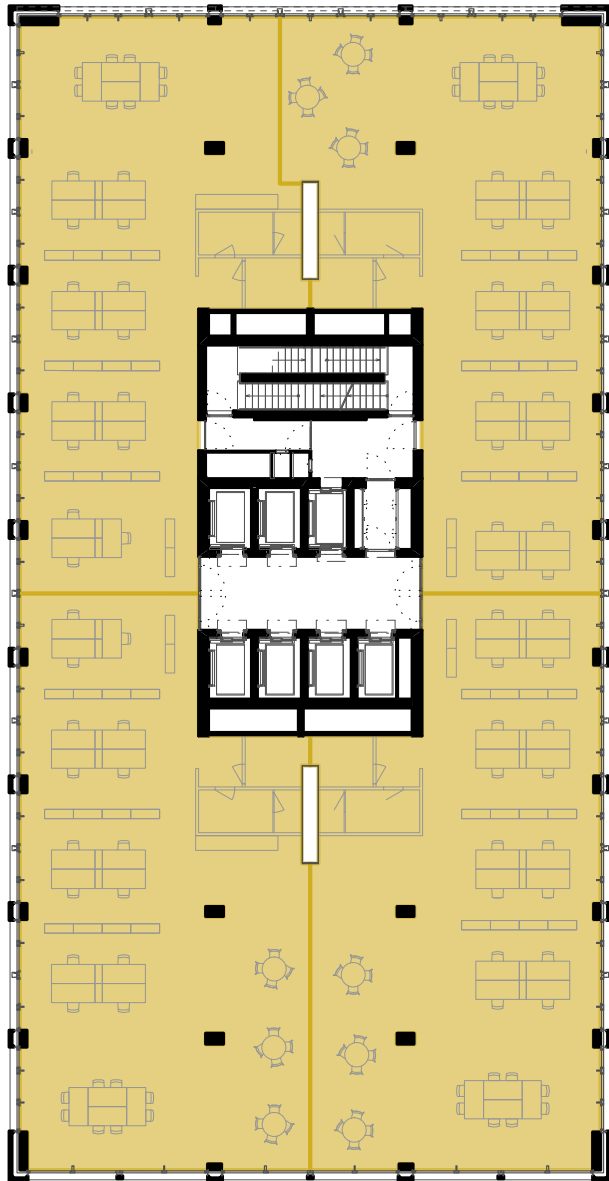




5th floor

Subarea 1

Subarea 2



Subarea 4

Subarea 3

Opportunities. At a higher level.

Messturm Zurich offers flexible office and commercial space amounting to over 22,000 m² in total. This is where you can find exactly the space you need for your company. A typical floor area measures between 800 m² and 2,300 m². You enjoy total flexibility and can choose a modular unit such as a quarter floor, an entire floor, or even several floors. This variety of possible combinations gives you a lot of freedom to design the space according to your needs. You can rent parking spaces in the building's garage and basement storage rooms along with your rental space.

Rental offer (gross area)

Total area	1,020 m²
Subarea 1	232 m ²
Subarea 2	250 m ²
Subarea 3	269 m ²
Subarea 4	269 m ²

5

Your advantages

Advantages. At a higher level.

By choosing this top location in Zurich-Nord, you'll not only be enhancing your company's reputation but offering your employees an ideal location with some extremely attractive opportunities as well. Messeturm Zurich offers everything you could possibly want – and then some!

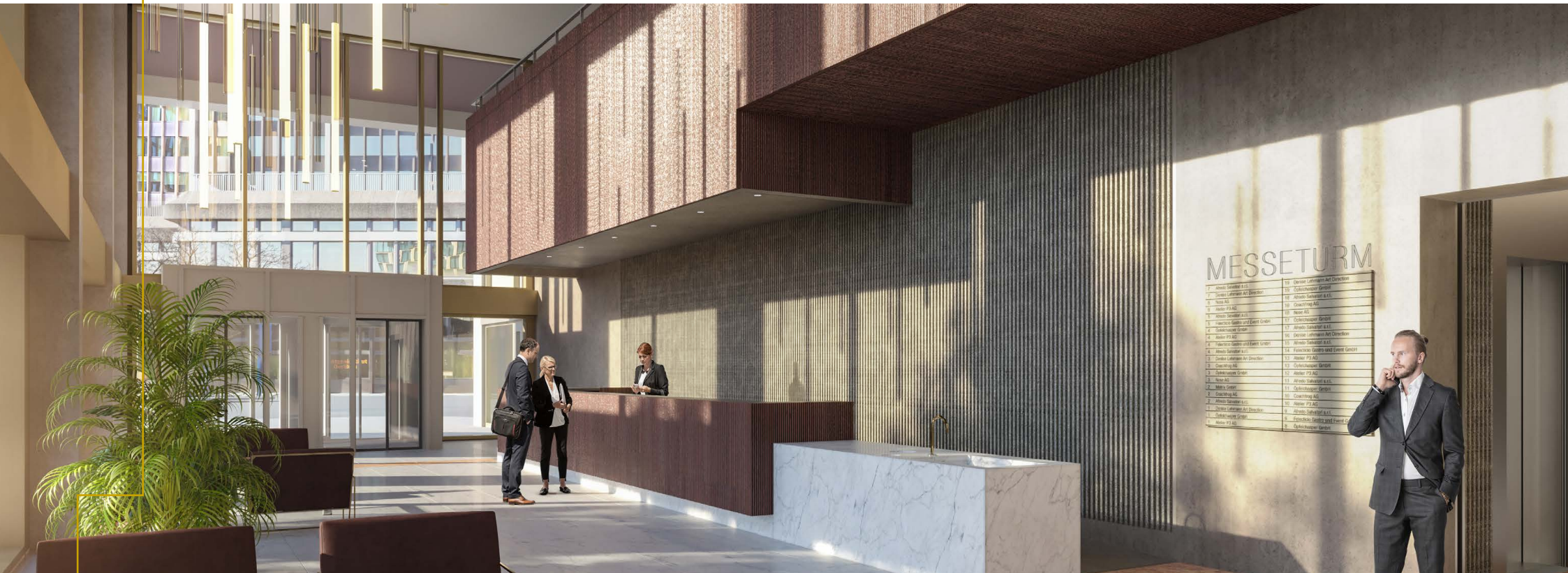
Here are the most important advantages:

- Restaurant on the ground floor
- Migros on the ground floor
- Day Nursery in the building
- 3 conference rooms for hire for events, meetings, and seminars
- Mailroom with digital mailboxes
- Dedicated delivery and disposal room with recycling
- Well-maintained common checkrooms with showers
- Beautiful parks for sport and recreation in the immediate vicinity: «Inner Garden», WolkenWerk-Park, Leutschenpark, Glattpark, etc.



Messeturm Zurich has been built and certified in accordance with the demanding standards stipulated by LEED Platinum. LEED is the world's best-known and most prestigious system for rating buildings: By awarding its certificate, LEED guarantees that a building has been developed, planned and realized in accordance with sustainable – and measurable – aspects. This sustainability indicator includes location, water efficiency, energy and climate, construction materials and sources of raw materials, together with the environmental quality of the interiors. Platinum Certification is the highest of the four awards that can be achieved.

Quality. At a higher level.



7

Your contact

Connections. At a higher level.

We have many more good reasons why your business will be successful in Zurich Oerlikon. Messeturm Zurich simply offers everything your company needs. We look forward to your call or email.

STUMP + PARTNER
Binzallee 4
CH-8055 Zurich
+41 44 439 60 10
info@messeturmzurich.ch

[messeturmzurich.ch](https://www.messeturmzurich.ch)

As at March 2025: The information, visualizations, floor plans, etc. contained in this brochure are provided for general information purposes only and we cannot accept any responsibility for their accuracy; nor do they form part of any contractual agreement. We reserve the right to make changes and adaptations to the construction and materials as and when required.

